

The RN to BSN Program at the Texas Tech University Health Sciences Center El Paso Gayle Greve Hunt School of Nursing

This RN to BSN program is designed to accommodate the working RN's schedule. The convenient 30-hour program, conducted entirely online through web-based instruction, is constructed to make graduates more marketable in the health care arena, whether in a current position, or in future employment endeavors. Nurses with a Bachelor's of Science in Nursing (BSN) are in high demand because of their broader education. A BSN education expands the ability to access and use evidence in clinical decision making, understand informatics and its impact on practice, have an expanded view of the impact of families and communities on health outcomes, and serve in a leadership role on any health care team. The BSN education is also a natural progression to graduate school and expanded roles in education, advanced practice, and administration.

The GGHSN RN to BSN Program curriculum is designed to provide flexibility.

Complete the program in as little as three terms, if you attend full-time, or four terms if you attend part-time.

Course work is divided into seven week mini-mesters to accommodate your work schedule.

The program cost is competitively priced for both in-state and out-of-state students.



General Education Prerequisites

General education course requirements are listed below. These courses must be completed before beginning the program. Each of the pre-nursing course requirements should be completed with a grade of C or better. Courses can be taken at any accredited community college or institution of higher education that provides comparable courses. There is no time limit for acceptance of prerequisite courses completed in previous years. A maximum of 15 credit hours can be earned via credit by examination.

REQUIRED PREREQUISITE COURSES	HOURS
COMMUNICATION English ENGL 1301, 1302	6
HUMAN ECOLOGY* Food and Nutrition HECO 1322 or BIOL 1322	3
HUMANITIES AND VISUAL PERFORMING ARTS Visual/Performing Arts [any core art, music, drama, or theatre arts course]	3
Humanities [any core literature, philosophy, modern or classical language/literature, or cultural studies course]	3
MATHEMATICS Must be a core approved course.	3
NATURAL SCIENCES Anatomy BIOL 2401 Physiology BIOL 2402 Chemistry or any core science Microbiology BIOL 2420 or BIOL 2421	4 4 4 4
SOCIAL AND BEHAVIORAL SCIENCES United States History HIST 1301, 1302 Political Science GOVT 2301 and 2302 or GOVT 2305 and 2306 Psychology PSYC 1300 Life Span Growth and Development PSYC 2314	6 6 3 3
Total Hours	52
Students must complete three credit hours of math to meet core curriculum requirements. If the student does not take math statistics for the statistics credit, then an additional upper level mathematics course must be completed to meet the core requirement.	
* DCCCD/Del Mar College A.D.N. graduates are exempt.	

TEXAS TECH UNIVERSITY
HEALTH SCIENCES CENTER™
EL PASO



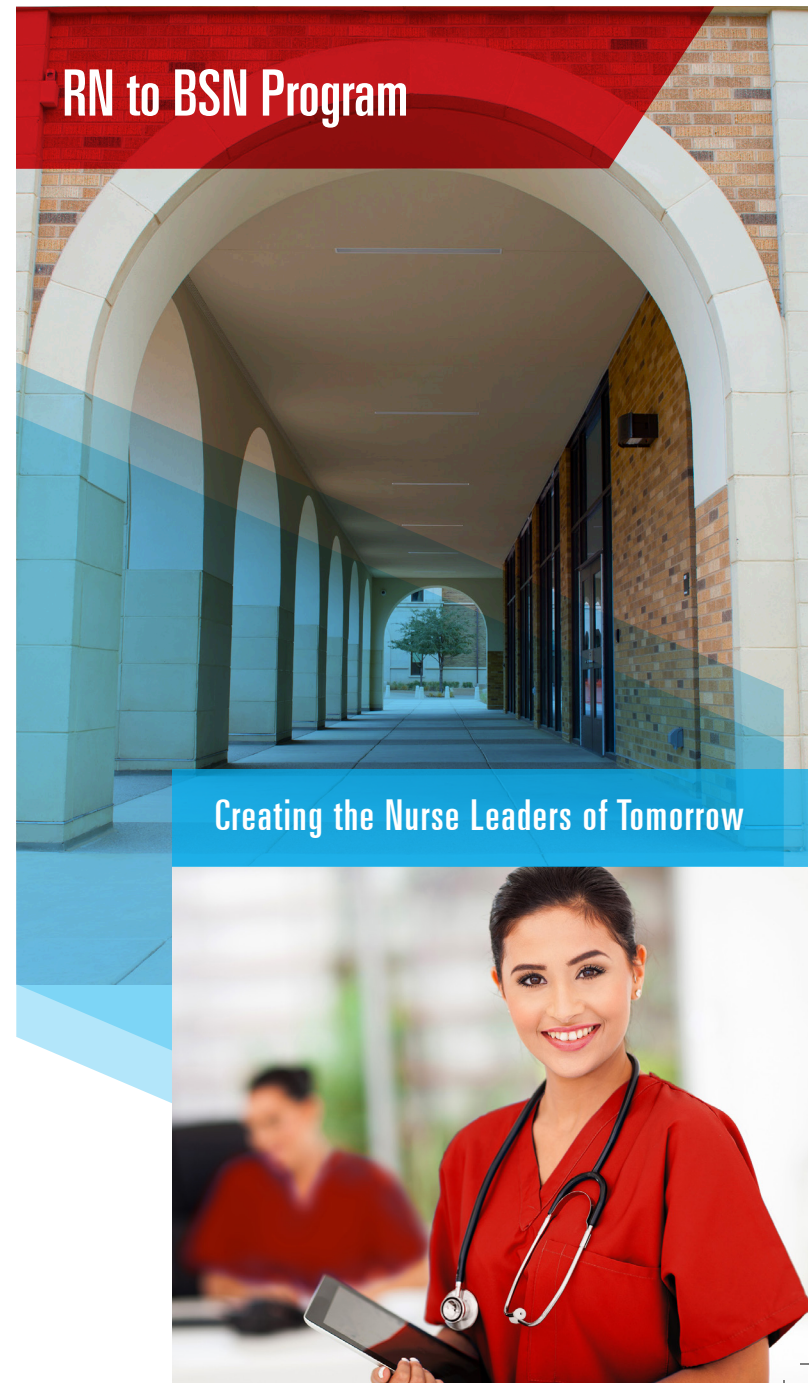
Gayle Greve Hunt School of Nursing

210 Rick Francis Street
El Paso, Texas 79905



TEXAS TECH UNIVERSITY
HEALTH SCIENCES CENTER™
EL PASO

Gayle Greve Hunt School of Nursing



Texas Tech University Health Sciences Center El Paso Gayle Greve Hunt School of Nursing



Admission Criteria

- Minimum GPA is 2.5 in both general education core prerequisites and nursing courses
- Completion of 52-55 credit hours of general education prerequisite courses
- Graduate of a school of nursing with both regional and professional education accreditation
- Valid, unencumbered RN license
- Students receiving a bachelor's degree from TTUHSC El Paso must meet the Texas Higher Education Coordinating Board's general education core curriculum. Detailed information can be found here: statecore.its.txstate.edu



Application Deadline Dates

- Spring Admission Application Deadline – October 1**
- Summer Admission Application Deadline – March 1**
- Fall Admission Application Deadline – July 1**

Visit elpaso.ttuhs.edu/son to access the online application. The GGHSO RN to BSN program can be completed in as little as 12 months.

For more information or to set up an advising appointment, please contact:

**Gayle Greve Hunt School of Nursing
Office of Student Affairs
915-215-6124
or email: gghson@ttuhsc.edu**

Financial Information

Grants and loans are available through the TTUHSC El Paso Financial Aid Office. Students interested in receiving grants or loans through TTUHSC El Paso or scholarships through the Gayle Greve Hunt School of Nursing are required to complete a free application for Federal Student Aid (FAFSA).

For more information, contact the TTUHSC El Paso Financial Aid Office at 915-215-5602 or elp.financialaid@ttuhsc.edu.



RN to BSN DEGREE PLAN

CREDITS

SPRING SEMESTER

GNUR 4373 Introduction to Evidence	3
GNUR 4374 Nursing Management and Leadership	3
GNUR 4375 Information Systems & Quality Management	3
GNUR 4383 Legal & Ethical Issues in Healthcare	3

SUMMER SEMESTER

GNUR 4308 Global Health Issues in Nursing	3
GNUR 4376 Population Focused Community Health	3
GNUR 4364 Informatics in Nursing Practice	3
GNUR XXXX Nursing Elective	3

FALL SEMESTER

GNUR 4390 Baccalaureate Nursing Practice	3
GNUR 4381 Issues and Trends in Nursing	3

TOTAL CREDIT HOURS

30

The baccalaureate degree program in nursing at the Texas Tech University Health Sciences Center El Paso Gayle Greve Hunt School of Nursing is accredited by the Commission on Collegiate Nursing Education (www.ccnaccreditation.org).

Learning Platform

The online learning platform for nursing courses is provided by Canvas. You will learn through scheduled modules in each course. With the guidance of experienced faculty, you will interact with other students through discussion forums, live chats, e-mail correspondence, and online conferencing. Required and recommended textbooks and other electronic resources will also be used.

Technological Requirements

You will need a computer with broadband internet access, as well as basic computer skills to include Microsoft Office, and the ability to navigate the internet.

Each student will be required to complete a brief orientation prior to the start of classes. The time required to complete the orientation will be approximately two hours.

