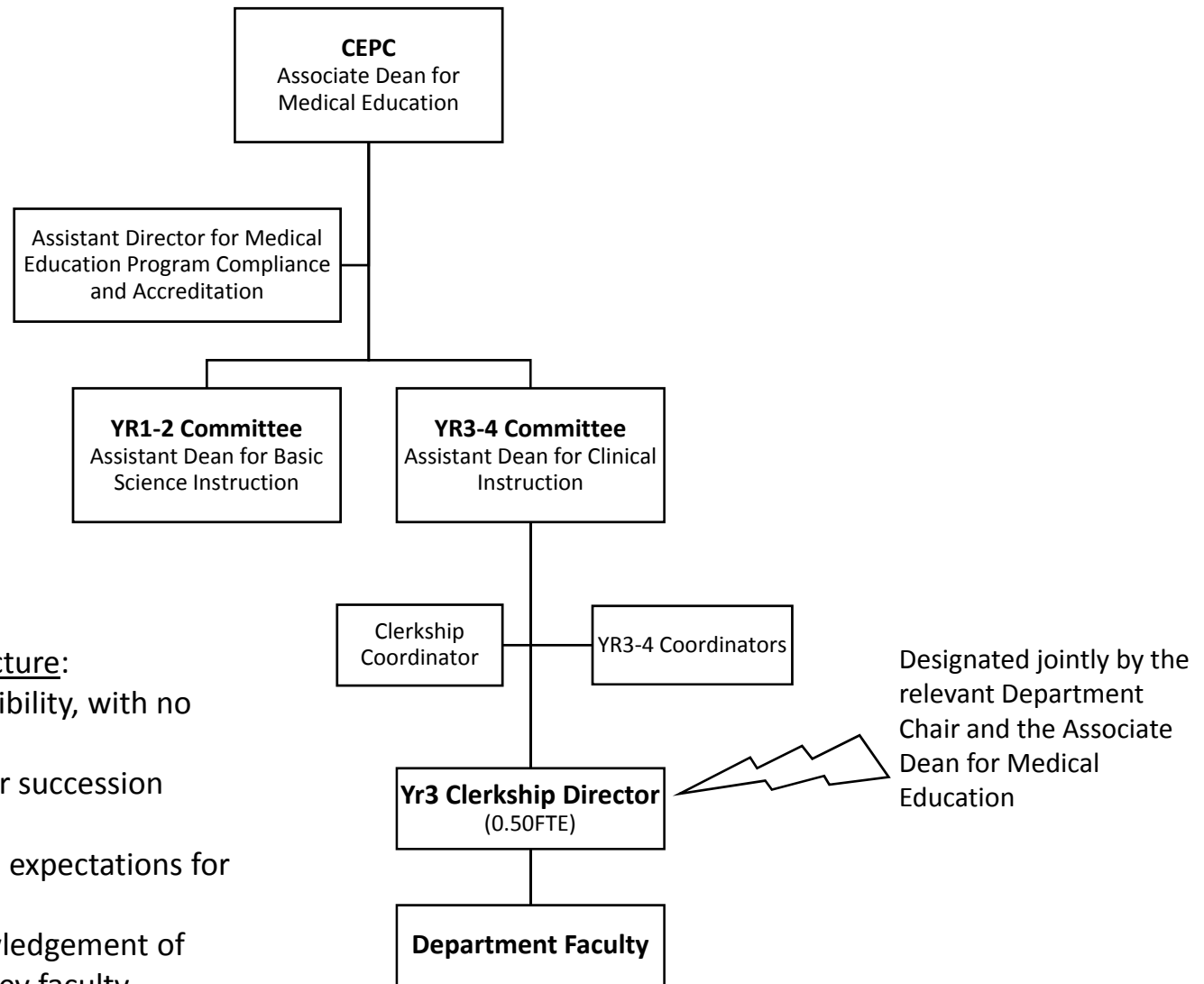


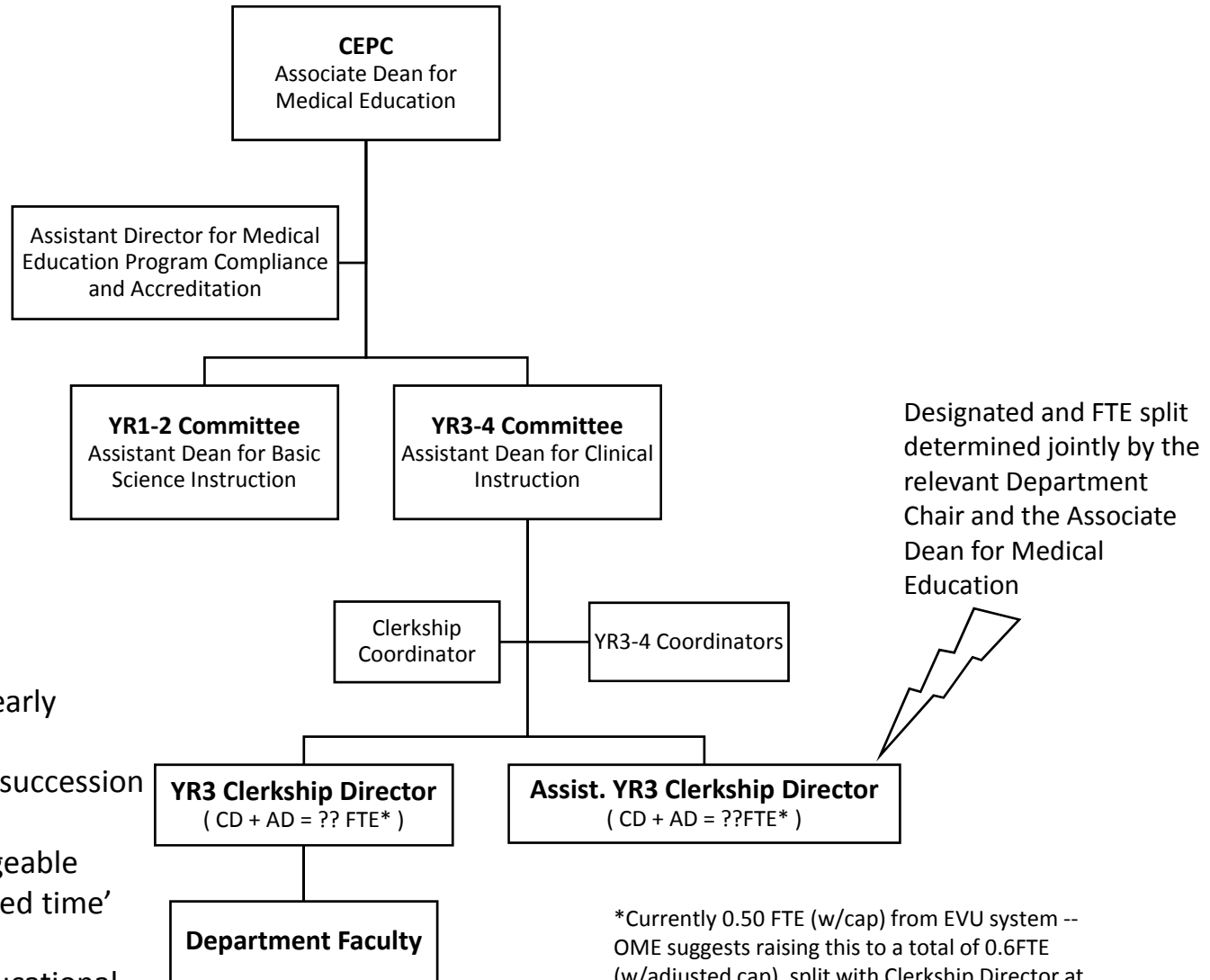
# Current Clerkship Administration



## Challenges related to this structure:

- System implies limited flexibility, with no designated back-up
- No inherent mechanism for succession planning
- Creates unrealistically high expectations for 'protected time'
- Limits institutional acknowledgement of educational effort to one key faculty member

# Proposed Clerkship Administration



## Potential advantages:

- Greater flexibility and clearly designated back-up
- Inherent mechanism for succession planning
- More flexible and manageable expectations for 'protected time'
- Provides institutional acknowledgement of educational effort by the Assistant Clerkship Director

\*Currently 0.50 FTE (w/cap) from EVU system -- OME suggests raising this to a total of 0.6FTE (w/adjusted cap), split with Clerkship Director at 0.3 FTE or greater