

# CIMA Lectures on World Health

featuring

**Barbara C. Pence, PhD, CCRP**

Professor of Pathology

School of Medicine

&

**M. Christina Esperat, RN, PhD, FAAN**

Professor and Associate Dean

Anita Thigpen Perry School of Nursing

---

## Linking Community-Based Participatory Research with Revitalized Primary Care in the Philippines

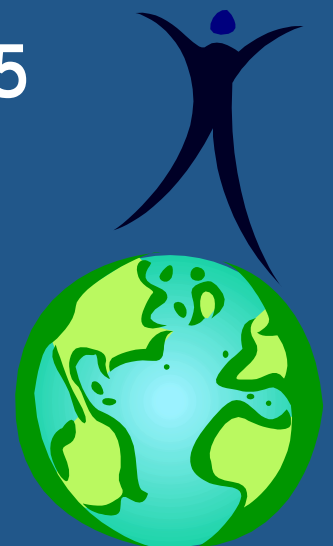
**Wednesday, September 15**

**12:00 noon CST**

**1C125 A**

---

Drs. Pence and Esperat will discuss their recent work with Silliman University located in Dumaguete, Philippines. This research has culminated in the preparation of a NIH Fogarty International Center grant. This grant will build research capacity at the LMIC institution in an innovative way that ties training in community-based participatory research methodologies targeting the revitalization of primary health care in the Philippines.



### Fall 2010 Lecture Series Dates

Every 1st and 3rd  
Wednesday

Amarillo room 4720  
Odessa room 2C91  
El Paso (11:00 am MT)  
room 235

- September 1
- September 15
- October 6
- October 20
- November 3
- November 17
- December 1

**Free lunch will be provided  
to the first 35 attendees!**

(Lubbock Campus only)



Persons needing assistance are  
requested to call 806-743-1524 or  
e-mail [CIMA@ttuhsc.edu](mailto:CIMA@ttuhsc.edu)