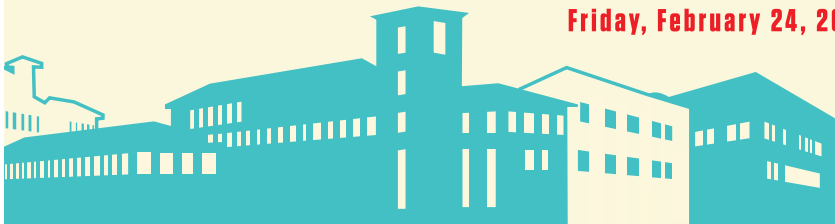


# 6<sup>TH</sup> ANNUAL CULTURAL Competence CONFERENCE

Wyndham El Paso Airport  
Hotel and Water Park  
2027 Airway Blvd., El Paso, Texas 79925

Friday, February 24, 2017



## CONFERENCE OVERVIEW AND TARGET AUDIENCE

This educational activity is designed for all health care professionals and community organization staff. The conference objective is to enhance interpersonal interactions within our health care system, ensuring that medical care and services are delivered to the community in a culturally competent manner.

## OBJECTIVES

Following the conference, participants should be able to:

- Recognize the importance of promoting cultural competence to enhance learning environment, working environment, and patient care within a health care system.
- Identify the skills necessary to provide culturally competent care to disabled and lesbian, gay, bisexual, and transgender (LGBT) populations.
- Resolve the ethical challenges that occur when differences in culture, values, and beliefs exist between health care professionals and their patients.
- Model ethical and culturally sensitive interactions between patients, their families, and health care providers.

## CME Accreditation and Designation

### Accreditation

The Texas Tech University Health Sciences Center El Paso Paul L. Foster School of Medicine is accredited by the Accreditation Council for Continuing Medical Education (ACCME) to provide continuing medical education for physicians.

### Credit Designation

The Texas Tech University Health Sciences Center El Paso Paul L. Foster School of Medicine designates this live activity for a maximum of *6.25 AMA PRA Category 1 Credits*<sup>™</sup>. Physicians should claim only the credit commensurate with the extent of their participation in the activity.

### Ethics Credit

This activity provides 6.25 continuing medical education (CME) credit hours toward the annual requirement of the Texas Medical Board for continuing medical education credit in medical ethics or professional responsibility.

## Nursing Accreditation and Credit

University Medical Center of El Paso is an approved provider of continuing nursing education by the Texas Nurses Association, an accredited approver by the American Nurses Credentialing Center's Commission on Accreditation.

This activity provides up to 6.25 continuing nursing education contact hours.

## CHES Accreditation and Credit

This program is sponsored by Texas Tech University Health Sciences Center El Paso, a designated provider of continuing education contact hours (CECHs) in health education by the National Commission for Health Education Credentialing, Inc., and is designated for Certified Health Education Specialists (CHESs) and/or Master Certified Health Education Specialists (MCHESs). Participants are eligible to receive up to 6.5 total Category I CECHs.

Maximum number of advanced-level CECHs is 6.5.

## Program Schedule

\*Eligible for CME ethics credit

Time	Topic/Title	Speaker
7:00 - 7:50am	Registration and Breakfast	
7:50 - 8:00am	Welcome and Opening Remarks	J. Manuel de la Rosa, M.D., M.P.H.
8:00 - 9:15am	*Keynote: <i>Difference Matters: Cultivating an Inclusive Health Care Environment</i>	Brenda J. Allen, Ph.D.
9:15 - 9:30am	Break	
9:30 - 10:45am	<b>Concurrent Sessions - Block 1</b> <i>The Road Less Traveled: A Path for the Differently Abled</i> <i>What Do You Mean I Have a Deaf Patient/Colleague/Student?</i> *TRANSforming Health Care Practice: <i>The Basic Principles of LGBT Health</i> <i>El Paso Transgender Health Initiative Group</i>	Jennifer Dahlgren-Richardson  Hector Granados, M.D., Sireesha Reddy, M.D., Oralia Loza, Ph.D., Marie Leiner, Ph.D., and Patricia Lara, Ph.D., CCC-SLP
10:45 - 11:00am	Break	
11:00am - 12:15pm	<b>Concurrent Sessions - Block 2</b> * <i>The Road Less Traveled: A Path for the Differently Abled</i> <i>A Messy Mind in a Sterile World: A Physician's Life with ADHD</i> TRANSforming Health Care Practice: <i>The Basic Principles of LGBT Health</i> <i>Developing LGBT-specific Cultural Competence: Lessons Learned from the Medical College of Georgia</i>	Lynley Holman, M.D., FACOG  Alexis L. Rossi Aguirre, Ph.D., M.Ed., M.A.
12:15 - 1:30pm	Networking Lunch and Poster Session	
1:30 - 2:45pm	<b>Concurrent Sessions - Block 3</b> <i>The Road Less Traveled: A Path for the Differently Abled</i> <i>Learning from AAMC Lived Experience Project: Creating a Culture of Access in Health Science</i> *TRANSforming Health Care Practice: <i>The Basic Principles of LGBT Health</i> <i>Clinical Complexities of Gender Dysphoria: Mental Health Care for Gender Nonconforming and Transgender Youth</i>	Lisa Meeks, Ph.D.  Aydin Olson-Kennedy, M.S.W., ACSW
2:45 - 3:00pm	Break	
3:00 - 4:15pm	*Closing Plenary: <i>Diversity 3.0: From Fairness to Excellence</i>	Marc Nivet, Ed.D., M.B.A.
4:15 - 4:30pm	Closing Remarks and Evaluation	Melissa Mendez, M.D.

## Conference Faculty

Brenda J. Allen, Ph.D.  
Vice Chancellor for Diversity and Inclusion  
University of Colorado Denver and Anschutz Medical Campus  
Denver, Colorado

Lynley Holman, M.D., FACOG  
Lawrence OB-GYN Specialists  
Lawrence, Kansas

Hector Granados, M.D.  
Assistant Professor  
Department of Pediatrics  
Texas Tech University Health Sciences Center El Paso  
Paul L. Foster School of Medicine

Sireesha Reddy, M.D.  
Professor  
Department of Obstetrics and Gynecology  
Texas Tech University Health Sciences Center El Paso  
Paul L. Foster School of Medicine

Oralia Loza, Ph.D.  
Assistant Professor  
College of Health Sciences  
Department of Public Health Sciences  
The University of Texas at El Paso

Marie Leiner, Ph.D.  
Assistant Professor  
Department of Pediatrics  
Texas Tech University Health Sciences Center El Paso  
Paul L. Foster School of Medicine

Patrícia Lara, Ph.D., CCC-SLP  
Assistant Professor  
College of Health Sciences  
Department of Rehabilitation Services  
The University of Texas at El Paso

Jennifer Dahlgren-Richardson  
Deafness Resource Specialist  
Volar Center for Independent Living  
El Paso, Texas

Alexis L. Rossi Aguirre, Ph.D., M.Ed., M.A.  
Consultant  
El Paso, Texas

Lisa Meeks, Ph.D.  
Assistant Professor, Medicine  
Director, Medical Student Disability Services  
University of California San Francisco School of Medicine

Aydin Olson-Kennedy, M.S.W., ACSW  
Associate Clinical Social Worker  
Los Angeles Gender Center  
Los Angeles, California

Marc Nivet, Ed.D., M.B.A.  
Executive Vice President for Institutional Advancement  
University of Texas Southwestern Medical Center

## Planning Committee

J. Manuel de la Rosa, M.D., M.P.H.  
Provost  
Vice President for Academic Affairs  
Texas Tech University Health Sciences Center El Paso

Jessica A. Calderón-Mora, M.P.H., MCHES  
Senior Director  
Office of Diversity, Inclusion, and Global Health  
Texas Tech University Health Sciences Center El Paso

Shaked Laks, M.D.  
Immediate Past Chair of Committee on Diversity  
Assistant Professor  
Department of Radiology  
Fellowship Program Director  
Texas Tech University Health Sciences Center El Paso  
Paul L. Foster School of Medicine

Melissa Mendez, M.D.  
Chair of Committee on Diversity  
Assistant Professor  
Department of Obstetrics and Gynecology  
Texas Tech University Health Sciences Center El Paso  
Paul L. Foster School of Medicine

Fatima Gutierrez, M.D.  
Chair-Elect of Committee on Diversity  
Assistant Professor  
Department of Pediatrics  
Texas Tech University Health Sciences Center El Paso  
Paul L. Foster School of Medicine

Mayra Morales, M.B.A.  
Associate Director  
Office of Diversity, Inclusion, and Global Health  
Texas Tech University Health Sciences Center El Paso

Lorrie Giessel, M.S.N., R.N.  
Director  
Office of Nursing Support Services  
University Medical Center of El Paso

Erika Silvas  
Coordinator  
Office of Continuing Medical Education  
Texas Tech University Health Sciences Center El Paso  
Paul L. Foster School of Medicine

## Conference Information

If you have any questions regarding this conference, email Erika Silvas at [erika.silvas@ttuhsc.edu](mailto:erika.silvas@ttuhsc.edu) or call 915-215-4880. Texas Tech University Health Sciences Center El Paso reserves the right to cancel this conference or make speaker substitutions in the event of unforeseen or extenuating circumstances.

In an effort to conserve resources, no printed materials will be available. Prior to the conference, you will receive an email with a link to conference materials, which you may print or download in advance. Conference dress is business professional and attendees are encouraged to bring a sweater or jacket for comfort. Persons with disabilities who need auxiliary aids or services must submit a written request to Mrs. Silvas at the email address listed above, so that appropriate arrangements can be made.

## Program Location

Wyndham El Paso Airport Hotel and Water Park  
2027 Airway Blvd.  
El Paso, Texas 79925

## Registration Information

The registration fee for the 6th Annual Cultural Competence Conference includes breakfast, lunch, and snacks. You may submit your registration form by one of the following methods:

Fax: 915-215-6479

Email: [cmeinfo@ttuhsc.edu](mailto:cmeinfo@ttuhsc.edu)

Online: <https://cme.elpaso.ttuhsc.edu/eventschedule.html>

Mail: TTUHSC El Paso

Office of Continuing Medical Education

5001 El Paso Drive

El Paso, TX 79905

The deadline to register is February 17. Any cancellations must be made in writing and received by February 13. A \$20 processing fee will be charged. No refunds will be made after February 13.



TEXAS TECH UNIVERSITY  
HEALTH SCIENCES CENTER.  
EL PASO

Office of Diversity, Inclusion, and Global Health



UNIVERSITY MEDICAL CENTER  
OF EL PASO

## Registration Form

Last Name

---

First Name

MI

---

### Credentials

Specialty | Professional Title

---

Telephone

---

Email Address

---

Business Street Address

---

City | State | Zip Code

---

Please check the category that best corresponds

- Physician \$125    Registered Nurse/Health Care Professional \$100  
 Researcher/Scientist \$100    Resident \$50  
 Student/Staff/Other (Community Organization Member) \$25

Please select a meal option

- Chicken Entree    Vegetarian Entree

Payment Options

If paying with a credit card,  
please call Yvonne Mancha at 915-215-4882.

If paying with a check, please mail to:

TTUHSC El Paso  
Office of Continuing Medical Education  
5001 El Paso Drive  
El Paso, TX 79905

Make payable to: TTUHSC EL PASO CME